

Session Name: New Session 11-30-2017 7-37 PM

Date Created: 11/30/2017 4:17:11 PM

Active Participants: 40 of 40

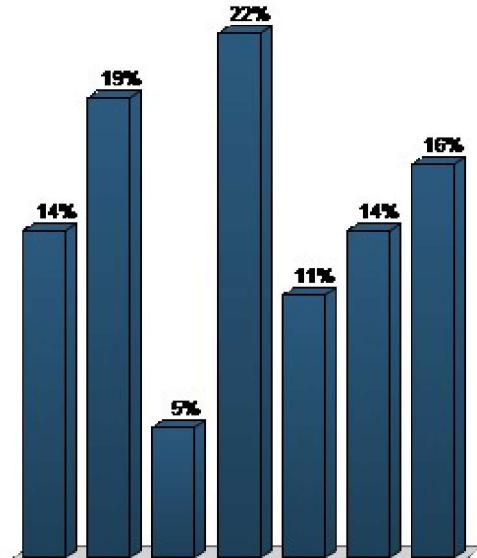
Average Score: 0.00%

Questions: 6

Results by Question

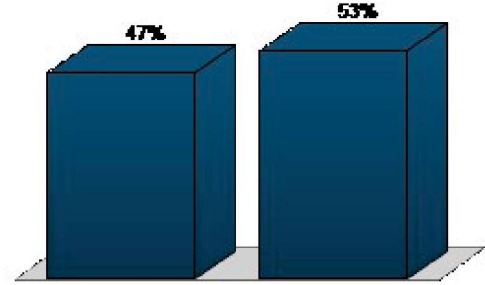
1. Are you a (Multiple Choice)

	Responses	
	Percent	Count
Downtown Bellevue Resident	13.51%	5
Downtown Bellevue Employee	18.92%	7
Both a Downtown Resident and Employee	5.41%	2
Bellevue Resident	21.62%	8
Bellevue Employee	10.81%	4
Both a Bellevue Resident and Employee	13.51%	5
Other	16.22%	6
Totals	100%	37



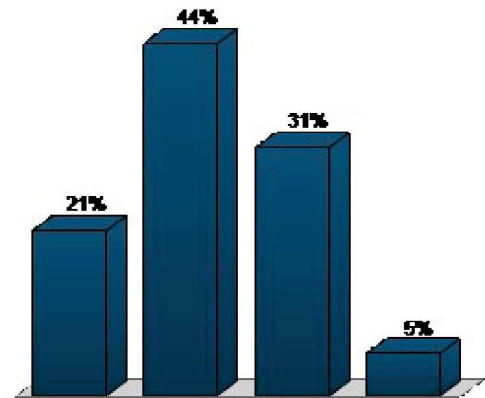
2. Have you completed the Downtown Demonstration Bikeway Project Online Survey? (Multiple Choice)

Responses		
	Percent	Count
Yes	47.37%	18
No	52.63%	20
Totals	100%	38



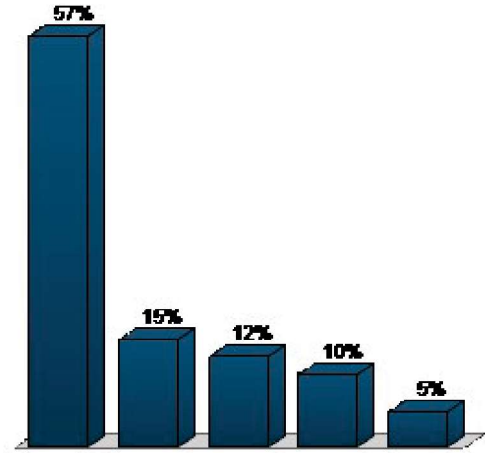
3. Which of the following do you feel best describes your relationship to bicycling? (Multiple Choice)

Responses		
	Percent	Count
Strong & Fearless	20.51%	8
Enthusiastic & Confident	43.59%	17
Interested but Concerned	30.77%	12
No way, No how	5.13%	2
Totals	100%	39



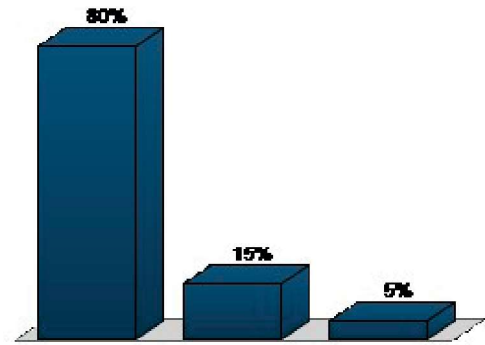
4. Do you agree that some tradeoffs to motor vehicle traffic flow and parking convenience are acceptable to provide safe facilities for people who bike in Downtown? (Multiple Choice)

Responses		
	Percent	Count
Strongly Agree	57.5%	23
Agree	15%	6
Neutral	12.5%	5
Disagree	10%	4
Strongly Disagree	5%	2
Totals	100%	40



5. Where do you think that people bicycling in Downtown Bellevue should ride? (Multiple Choice)

Responses		
	Percent	Count
On-street in a designated bike lane	80%	32
On-street in a travel lanes shared with motor vehicles	15%	6
On the sidewalk sharing space with people walking	5%	2
Totals	100%	40



6. On which street would you prefer to see a demonstration bikeway installed in 2018? (Multiple Choice)

	Responses	
	Percent	Count
108th Ave NE – Main St to NE 12th St	61.54%	24
106th Ave NE – Main St to NE 12th St	2.56%	1
Main St – Bellevue Way to 112th Ave	10.26%	4
NE 2nd St – Bellevue Way to 112th Ave	5.13%	2
Some other corridor	2.56%	1
None of the above	5.13%	2
No preference/I don't know	12.82%	5
Totals	100%	39

